

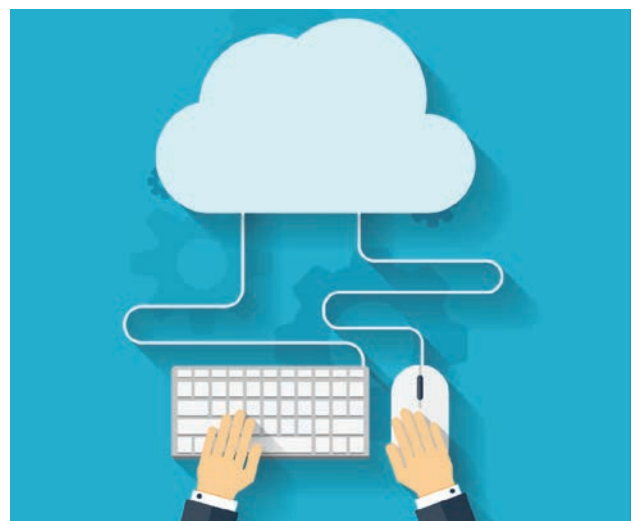
Cloud Onboarding: SAP Cloud Platform Integration (CPI) Setup

The trend in today's IT is increasingly moving towards the cloud. But it is unlikely that on-premise solutions will disappear completely from everyday business life. As a result, our system landscapes are becoming more and more complex and it is essential to link the two areas together. This is where SAP Cloud Platform Integration (CPI) can help, offering you a range of connectivity options to integrate cloud and on-premise solutions.

SAP Cloud Onboarding, especially configuration, is a challenge because there is no clear SAP documentation that covers all areas. This is where we come in. With this „Consulting in a Box“ package, experienced and certified consultants support you with onboarding and CPI setup. In this way, you avoid long familiarization periods and disruptions in daily operations. You also benefit from our experience and comprehensive SAP know-how.

Your benefit

- » **Time saving:** You do not need a long training in the subject
- » **Know-how:** Profit from the cross-system know-how of our certified consultants (SAP, VMware, Azure, AWS)
- » **Error-free:** Avoid errors that often occur during the initial configuration of CPI and onboarding
- » **Focus:** You concentrate on your daily business while we configure the CPI optimally for you



V3.0



GoBI Messaging
GoBI Application Integration
GoBI Data Analytics
GoBI Data Platform
GoBI Collaboration and Content
GoBI Datacenter
GoBI Cloud Productivity
GoBI Windows and Devices
GoBI Cloud Platform



Silver Project and Portfolio Management
Silver Communications
Silver Application Development
Silver Small and Midmarket Cloud Solutions
Silver Enterprise Mobility Management
Silver Security



AddOn®

Architektur | Consulting | Services | Training



Cloud Onboarding: SAP Cloud Platform Integration (CPI) Setup

Objective

- » Creation of an implementation plan for integration
- » Definition of critical parameters
- » Optimal configuration of Cloud Platform Integration
- » Support for questions about the setup
- » Implementation of the backend system setup

Our services

- » Implementation of Cloud Onboarding
 - Set up Cloud Account data
 - Set up Cloud Tenants

- » Implementation of the CPI Integration Setup
 - CPI Registration
 - Setting up global accounts, sub-accounts and groups
 - Set up Process Integration depending on the scenario
 - CPI configuration depending on the scenario (authorizations, sub-account, tenant etc.)
 - Perform tenant provisioning
 - Setting up certificates
- » Implementation of the backend system setup
 - Setting up certificates
 - Setting up the SM59 destinations (HTTP etc.)
 - Performing a smoke test

Phone	E-mail	Order number	Duration	Prices are quoted exclusive of VAT and distance-based additional expenses.
+49 7031 7177 58	consulting@addon.de	CBS33	3 days	€ 3 960,-

More successful Projects – “Consulting in a Box”

AddOn has drawn on its experience of finding optimal solutions for numerous projects to create an exceptional offer: Our “Consulting in a Box” packages. These stand for clearly defined consulting services for specific tasks. “Consulting in a Box” also means a structured

approach by experienced consultants, detailed analysis, professional documentation, presentation of results, open discussion of the best solutions plus specific recommendations for action.

You’ll find more “Consulting in a Box” offers for SAP, Virtualization, Microsoft, and Linux on our website www.addon.net/cib

You benefit from:

- » Best practice solutions
- » Targeted recommendations
- » Fixed-price consulting services
- » No further obligations
- » Consulting services available at short notice
- » Short duration



GoBI Messaging
GoBI Application Integration
GoBI Data Analytics
GoBI Data Platform
GoBI Collaboration and Content
GoBI Datacenter
GoBI Cloud Productivity
GoBI Windows and Devices
GoBI Cloud Platform



Silver Project and Portfolio Management
Silver Communications
Silver Application Development
Silver Small and Midmarket Cloud Solutions
Silver Enterprise Mobility Management
Silver Security

